



GOLDEN TRIANGLE®

Golden Streets 2024 Kickoff Meeting



Welcome

- Introductions
- Competition Overview
 - Schedule
 - Judging Criteria
- Judges' Insights
 - Design
 - Theme
 - Props
 - Plant Selection
- Landscaping on a Budget



Competition Overview



GOLDEN TRIANGLE

Schedule

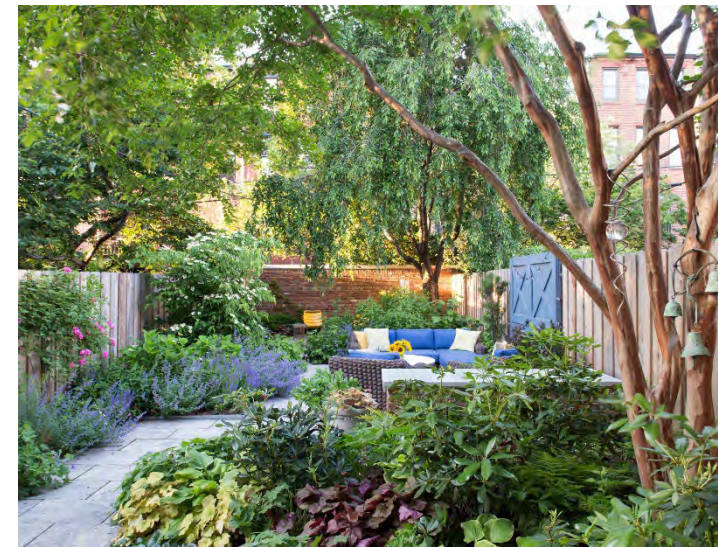
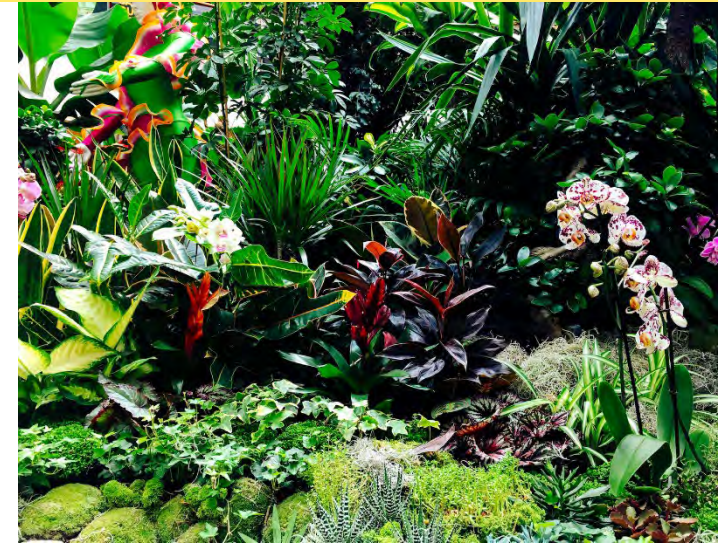
- **April 11** – Virtual Kickoff Meeting
- **Friday, May 17** – Deadline to sign up
- **Monday, June 10** – Designs must be complete
- **June 12-21** – Public voting period
- **Week of June 24** – Expert panel walks and picks winners
- **Week of June 24** – Winners announced via press release





2024 Theme: Urban Oasis

- Focus on big, leafy plants; bright flowers and colors; elements of water, shade, and respite
- Make downtown more lush, green, and hospitable for residents and visitors
- Create an oasis for pollinators





GOLDEN TRIANGLE

Judging Scorecard

- Overall Criteria
 - **Visual Impact:** colors pop, exciting use of volume and pattern
 - **Originality:** unique plant selection and creative plant arrangement
 - **Theme:** *Urban Oasis* theme can be seen clearly in the display
 - **Props:** useful and long-lasting props incorporated into design
- Sustainability Criteria
 - **Plant selection:** Plants selected are diverse, long-lasting and hardy, use minimal resources. High ratio of perennials to annuals.
 - **Pollinator factor:** Tree box employs pollinator-friendly plants





Expert Insights

Design Suggestions

Design Suggestions

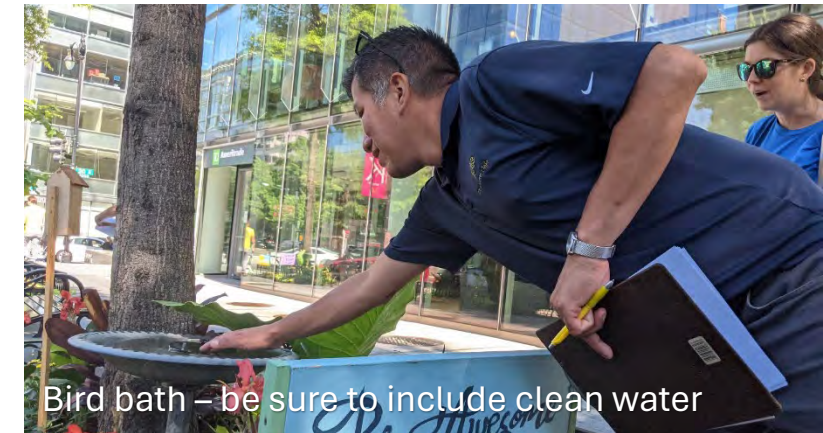
- Create an oasis: make the garden as inviting and colorful as possible.
- Craft your own garden theme as part of your Urban Oasis, make it a microcosm of a garden. (A beach, a forest, a secluded island, a sand dune maybe even a space garden)



Design Suggestions



- Use plants with a variety of heights to create a varied and dynamic design
- Plant an assortment of flower colors and shapes
- Use color repetition and patterns
- If using more than one bed, make them feel like an extension of each other.



- Props should remain throughout the summer, not just on judging day
- Go beyond ‘decoration’ – props can be creative, but they should support plant and animal life



The Importance of Pollinator Animals

- Pollinators—which include bees, butterflies, other insects, bats, hummingbirds, and more—are part of a healthy ecosystem
- Pollinators are vital to our food security, economy, and overall environmental health
- 1 out of every 3 bites of food you eat required pollinators
- Almost 90% of wild flowering plants and 75% of food crops depend on pollination for successful seed and fruit production



Plant Suggestions

Plant Suggestions – Foliage & Texture

- Use bold textures and colorful foliage
- Examples: bananas, palms, elephant ear, grasses-native or tropical, Coleus, dusty miller, Persian shield, Caladium



Plant Suggestions – Annuals



Ageratum – compact flower



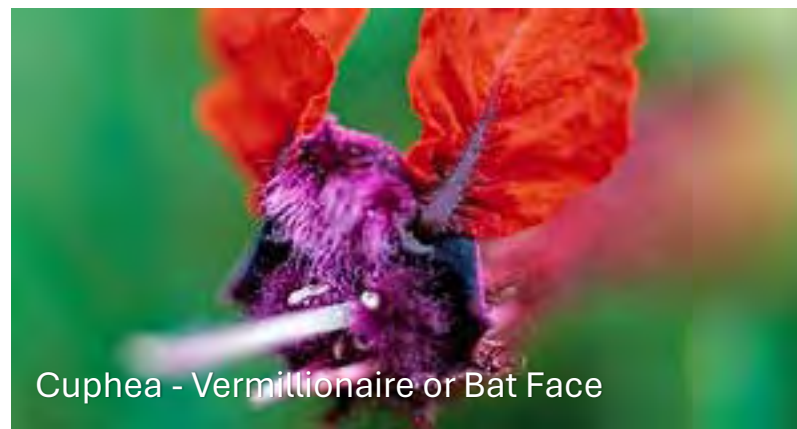
Cleome/Spider Flower – consider dwarf variety



Pentas – heat tolerant, keep well watered



Gomphrena – mixes well with other plants



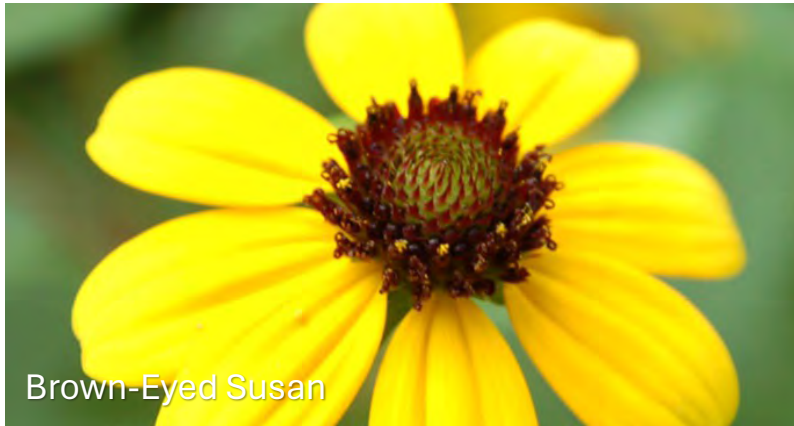
Cuphea - Vermillionaire or Bat Face



Lantana – full sun, drought tolerant

Consider long-season colorful annuals (Lantana, Angelonia, Pentas, Salvia, Cannas)

Plant Suggestions - Perennials



Consider native, long-blooming perennials (Pycnanthemum, Asclepias, Echinacea, hardy Hibiscus, Asters)

Amsonia hubrichtii
Bluestar



Echinacea purpurea
'Ruby Giant' Purple
Coneflower



Liatris pycnostachya
Prairie Blazing Star



Muhlenbergia capillaris
Pink Muhly Grass

Solidago rugosa 'Fireworks'
Goldenrod



Monarda fistulosa
Wild Bergamot



Landscaping on a Budget



Tips for Landscaping Budget Efficiency

- Design and plant selection
 - Plant size/maturity drives cost. Plant early!
 - Bulbs and perennials are a one-time investment, and more sustainable. Add a few annuals each year for pops of color.
- Plant sourcing
 - Set up business/wholesale account with nurseries (e.g. Walnut Springs, Babikow for annuals and perennials. Perennial Farm and Cavanos for perennials).
 - Consider delivery costs (minimum order size) and logistics (delivery location)
- Labor and contracting
 - You get what you pay for
- Minimizing maintenance and irrigation costs
 - Perennials require less maintenance, irrigation
 - Match plant selection to the irrigation level
 - Power washing damages plants—keep it away
 - Water in the morning. Don't use a sprayer; use a low-pressure watering wand.
 - Rat avoidance
 - Plant Catmint (Nepeta)
 - Avoid concentrations of tall grasses, which attract rat burrows
- Fertilization & Mulching – protect your investment
 - Osmocote – granular slow release fertilizer
 - Make sure bed is fully watered before adding fertilizer
 - Light layer (1") of mulch or superfines. Don't mound mulch around tree trunks.



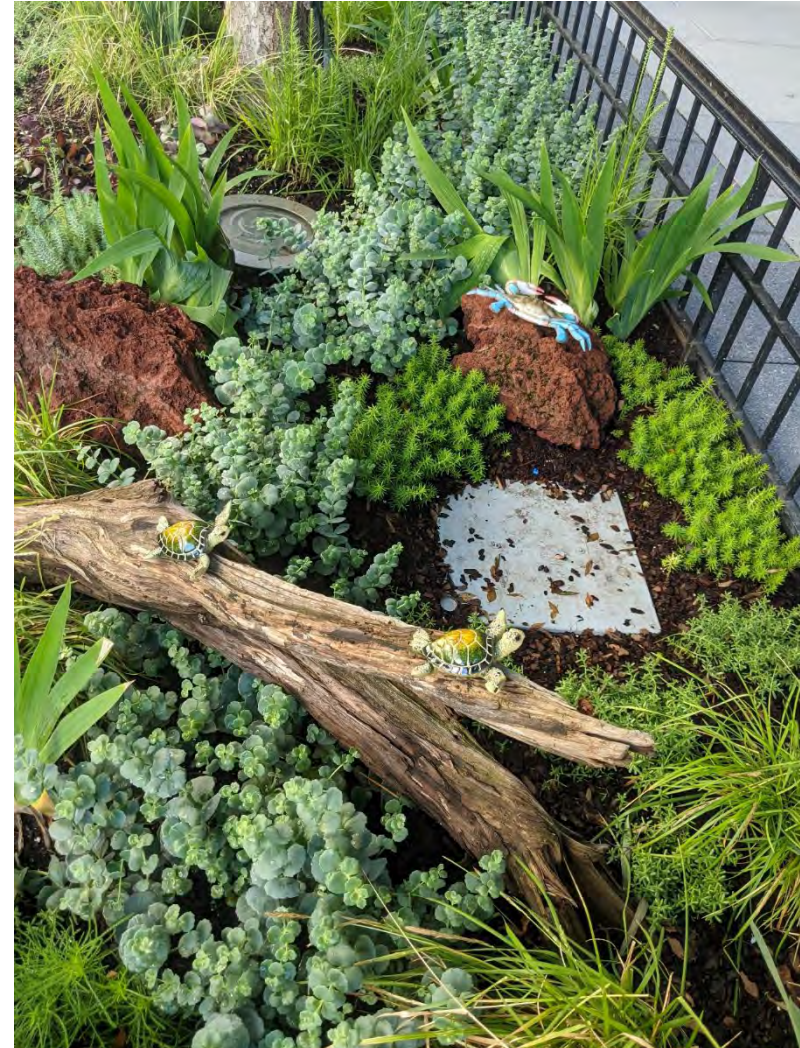


Questions?

Contact Andrew Huff, Member Relations, Golden Triangle BID

Past Winners and Inspiration Images

1025 Connecticut Avenue





GOLDEN TRIANGLE

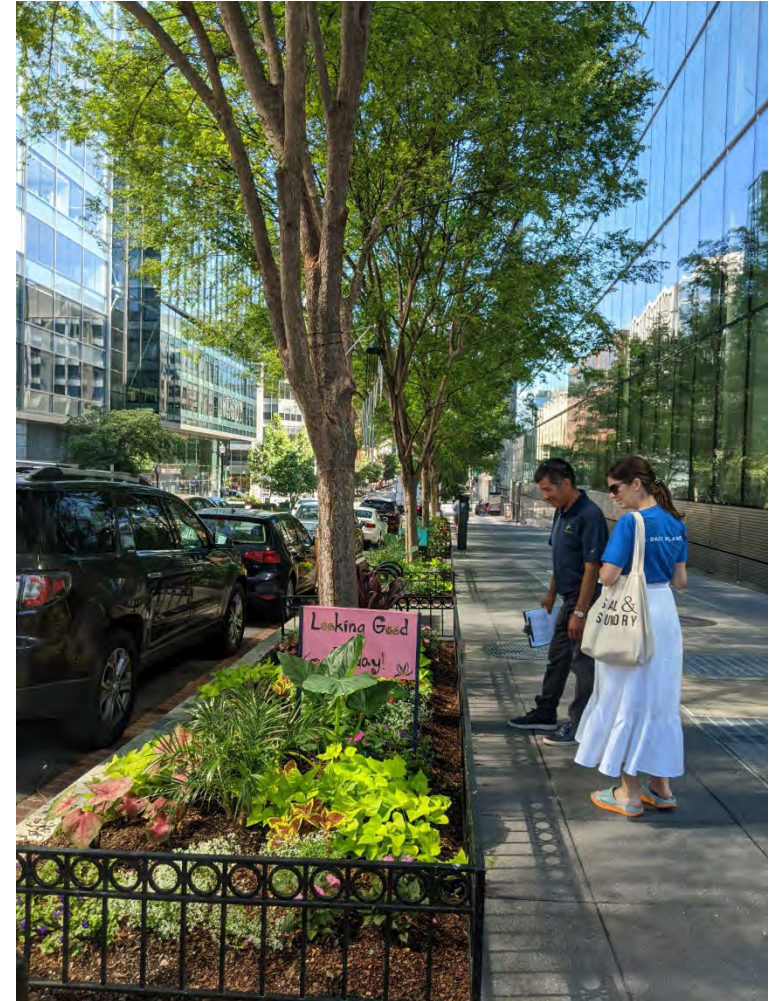
1120 Connecticut Ave





GOLDEN TRIANGLE

1999 K Street NW





GOLDEN TRIANGLE

888 17th Street





GOLDEN TRIANGLE™

800 17th Street





GOLDEN TRIANGLE

1220 19th Street





1150 Connecticut Ave

